



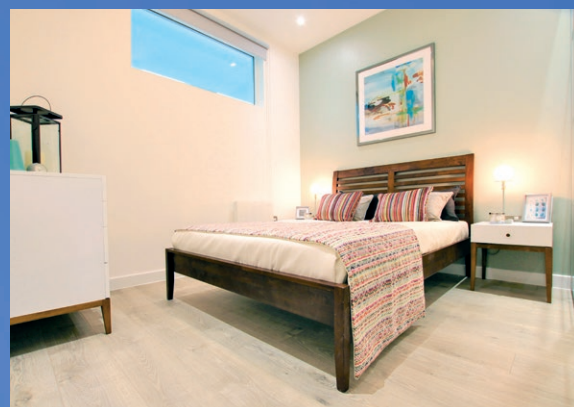
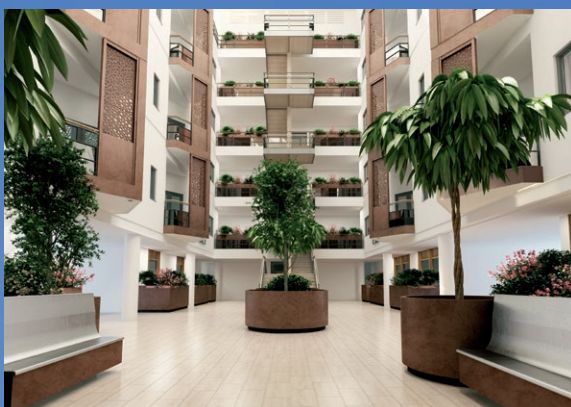
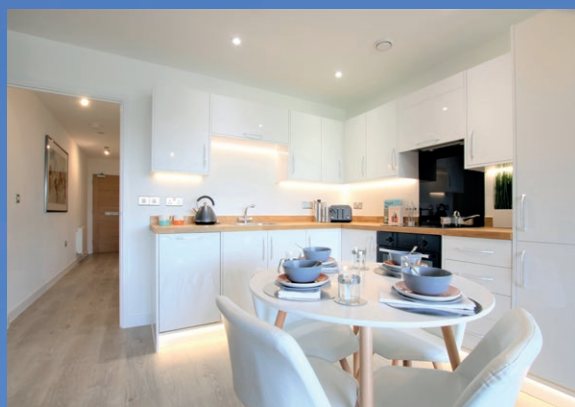
EDINBURGH WAY | HARLOW | CM20 2JE

**FIFTH FLOOR  
NOW RELEASED!**

# NEW SHOW APARTMENTS NOW AVAILABLE TO VIEW

*7 days a week 10am – 5pm*

*Late night opening Thursdays until 7pm*



- A Conran designed building
- 250 luxury starter suites, 1 and 2 bed apartments
- Apartments designed around 3 stunning internal atria
- Designer kitchens

- Sumptuous bathrooms and en-suites
- Moments from Harlow Town railway station (Liverpool Street 35 mins\*)
- A414, M11, M25 and A10 provide excellent road links

**STARTERS FROM**  
**£190,000**

**1 BEDS FROM**  
**£197,500**

**2 BEDS FROM**  
**£290,000**



CALL NOW TO BOOK YOUR APPOINTMENT TO VIEW

**01992 663890**

SALESHERTS@LANESNEWHOMES.CO.UK  
LANES NEW HOMES, 2 MARKET ST, HERTFORD SG14 1BD



A DEVELOPMENT BY  
**LAND CHARTER HOMES**

LANESNEWHOMES.CO.UK

\*'Help to Buy', terms and conditions apply. \*Travel times taken from National Rail Enquiries.